

**Corporate Offices**  
**Richard Wittschiebe Hand**

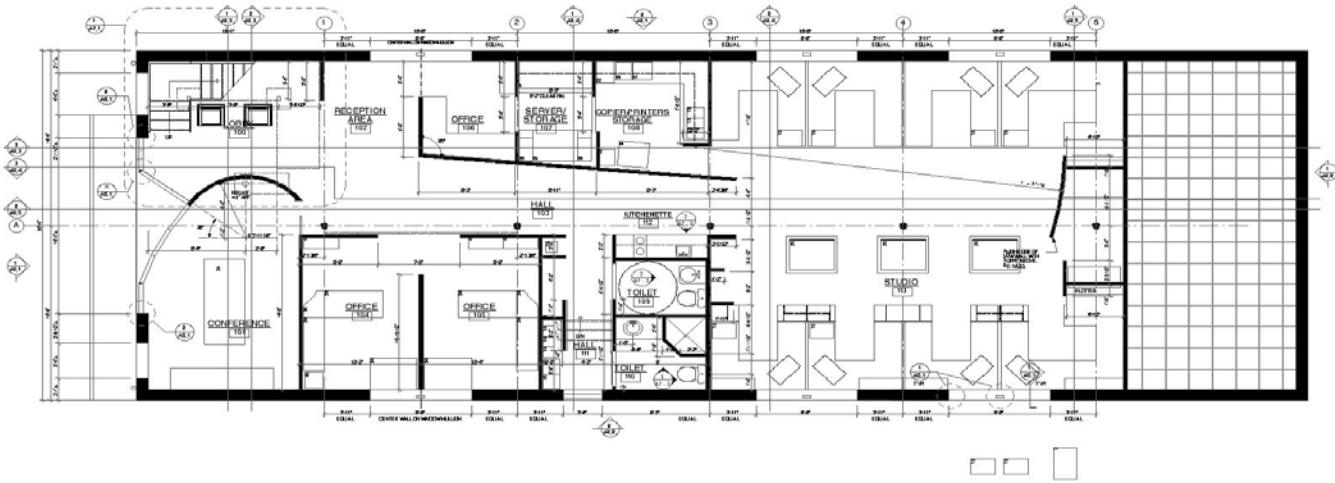
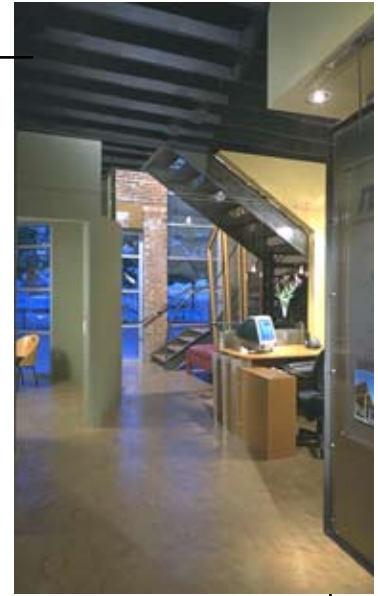
Atlanta, Georgia

**1999 AIA Georgia Sustainable Design Award of Merit**



<b>Services</b>	Programming, Interior Design/FFE, Architectural Design through Construction Administration
<b>Completion</b>	1997
<b>Construction Cost</b>	\$250,000
<b>Client</b>	Richard Wittschiebe Hand 15 Simpson St. Atlanta, GA 30308 404.688.2200 carol@rwhdesign.com





### Description

Richard Wittschiebe Hand corporate headquarters is located in a renovated 4,500 square foot two-story brick building. Formally occupied as a nightclub, the interior of the space was reduced to its basic structure. Simple inserted forms and muted color palettes define working spaces. The exterior is redefined with a new curved entry and openings allowing natural light throughout the entrance.

